



Valet parking is available at the main entrance (★) and between the Professional Pavilion and Pavilion garage. The valet parking fee is \$5. Covered self parking is located off of Enderly Place (★).

BAYLOR
All Saints Medical Center
at Fort Worth
1.800.4BAYLOR
BaylorHealth.com

In 1993, then All Saints Episcopal Hospital in Fort Worth, Texas established the first hospital-based treatment center for lymphedema in the United States of America. The same quality of care continues at Baylor Fort Worth.

Our lymphedema treatment team consists of licensed physical therapists who are certified in Complete Decongestive Therapy (CDT) and by the Lymphology Association of North America (LANA).

Member: NLN – National Lymphedema Network
www.lymphnet.org

The Web site referenced herein is provided solely as a convenience to the reader. Baylor Health Care System does not own, operate, sponsor or endorse the content of the Web site.

Baylor Fort Worth is a not-for-profit health care organization serving the residents of Tarrant County and North Central Texas since 1906.

Physicians are members of the medical staff at one of Baylor Health Care System's subsidiary, community or affiliated medical centers and are neither employees nor agents of those medical centers, Baylor All Saints Medical Center at Fort Worth or Baylor Health Care System. Photographs may include models or actors and may not represent actual patients.
© 2011 Baylor Health Care Systems BASMC_709 CE 2.11

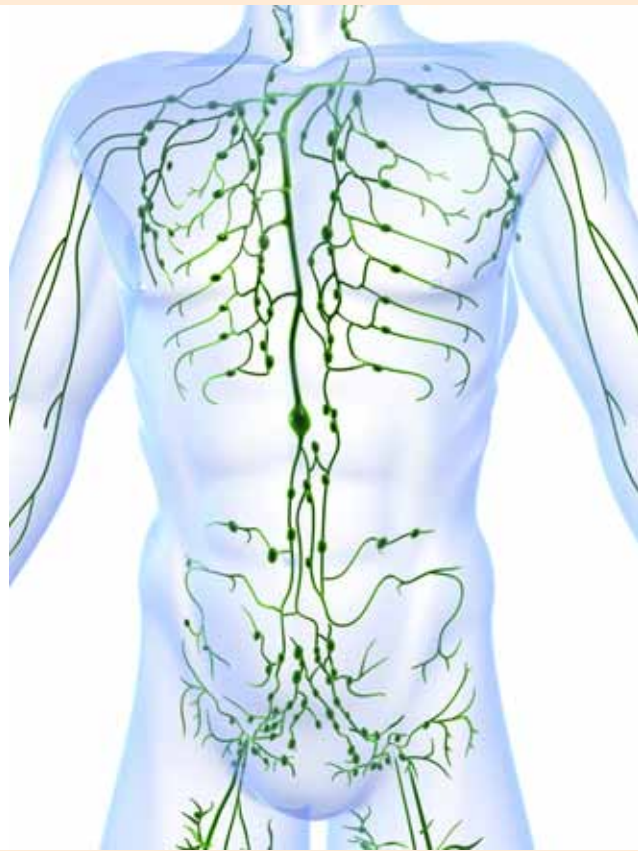
BAYLOR
All Saints Medical Center
at Fort Worth

1400 Eighth Avenue
Fort Worth, Texas 76104
817.922.2530

BaylorHealth.com/AllSaintsLymphedema

The Frances and Frank Turrella Lymphedema Center at Baylor All Saints Medical Center at Fort Worth

Providing treatment, therapies and education
for patients with lymphedema and edema.



BAYLOR
All Saints Medical Center
at Fort Worth

1400 Eighth Avenue, Fort Worth, Texas 76104

What is lymphedema?

Lymphedema is swelling of a body part (arm, face, neck, trunk, genitalia, legs) resulting from abnormal accumulation of lymph fluid.

Lymphedema can develop when a lymphatic network is deficient, damaged or missing. Left untreated, this stagnant, protein-rich fluid reduces oxygen availability, interferes with wound healing, and provides a medium for bacteria.

Are there different types of lymphedema?

Primary lymphedema is congenital or hereditary malformations of the lymph vessels or nodes. It can be present at birth, develop at the onset of puberty (praecox) or in adulthood (tarda).

Secondary lymphedema is acquired as a result of surgery, radiation over lymph nodes and vessels, trauma, infection or chronic venous insufficiency.

If you notice swelling, it is very important to seek immediate medical advice. Early diagnosis and treatment improve the reduction and control of lymphedema.

Initial



After six months of self care



What do we provide?

The most beneficial and non-invasive treatment for lymphedema is Complete Decongestive Therapy (CDT). CDT is not a cure for lymphedema but the treatment will reduce swelling in the affected area, help manage the condition, and improve quality of function.

CDT consists of four components which are tailored to each patient:

1. **Manual lymph drainage**, or **MLD**, with gentle manual strokes improves lymph flow out of the congested area and into the trunk toward the heart
2. **Compression bandaging** with padding and short stretch bandages; fitting for **compression garments**
3. **Therapeutic exercises** to decrease swelling and increase function
4. **Patient and family education** of self-care and follow-through includes information on the lymph system, precautions, and components of the CDT treatments.

Is a physician referral required?

Yes. Insurance coverage for treatment is decided by your individual plan for this outpatient service.

How do I contact the Frances and Frank Turrella Lymphedema Center at Baylor All Saints?

Contact the Lymphedema Treatment Center by calling **817.922.2530**.

